



2021

Music with Pearlynn

Note
Strategies 02



Music with Pearlynn © 2021

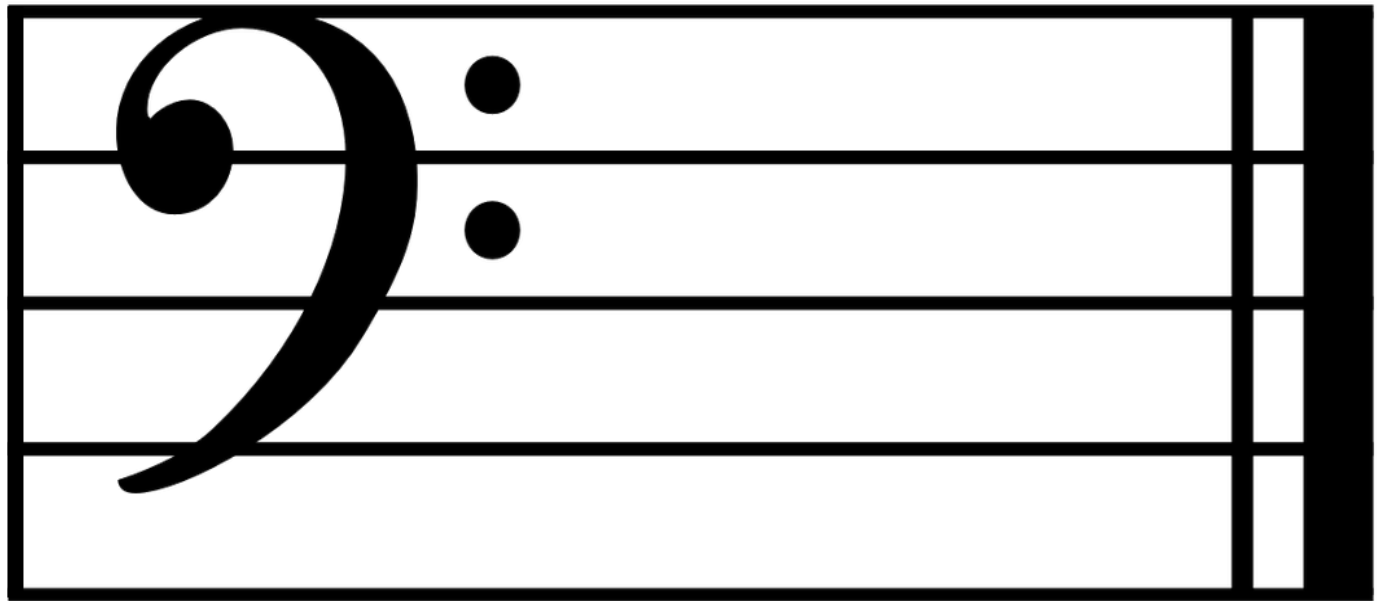
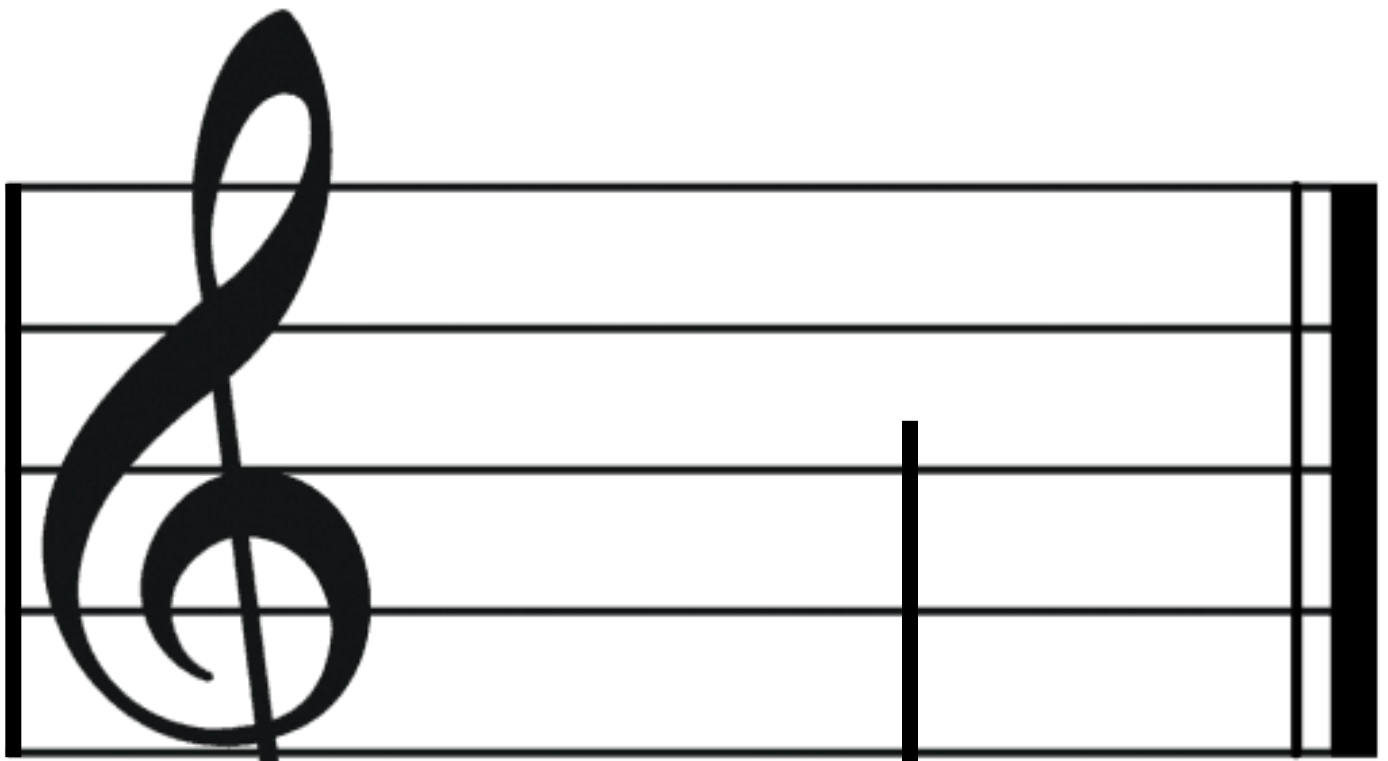
Music with Pearlynn.com

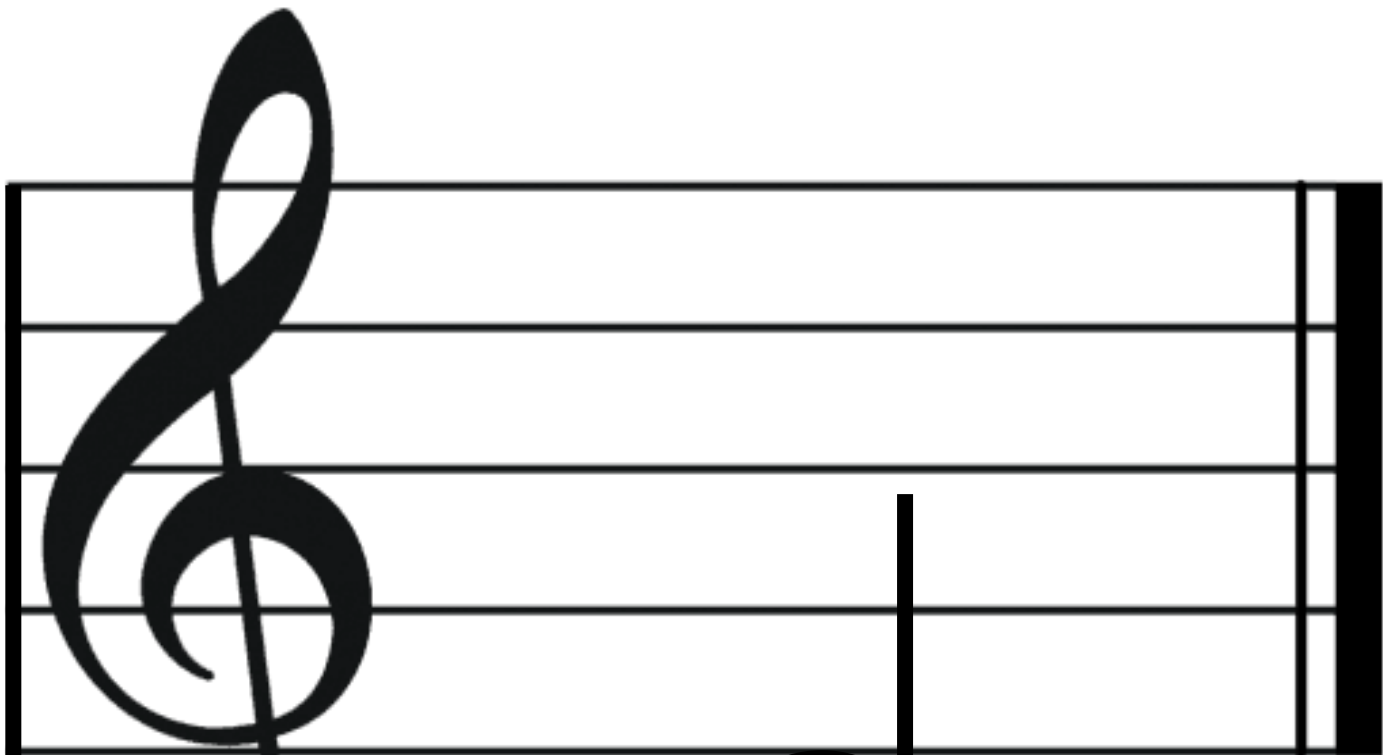
1/1/2021

NOTE STRATEGIES

The diagram features four houses with red roofs and brown chimneys. The first and third houses are labeled "DOG HOUSE" and the second and fourth are labeled "PEOPLE HOUSE". Each house has a piano keyboard on its front. The notes are: C (white), D (black), E (white), F (black), G (white), A (black), B (white). The first house has a white dog, a brown dog, and a bone. The second house has a boy, a girl, and a door. The third house has a white dog, a brown dog, and a bone. The fourth house has a boy, a girl, and a door. Below the houses, the notes are written as: CDE FG ABC DE FGAB.

CDE FG ABC DE FGAB





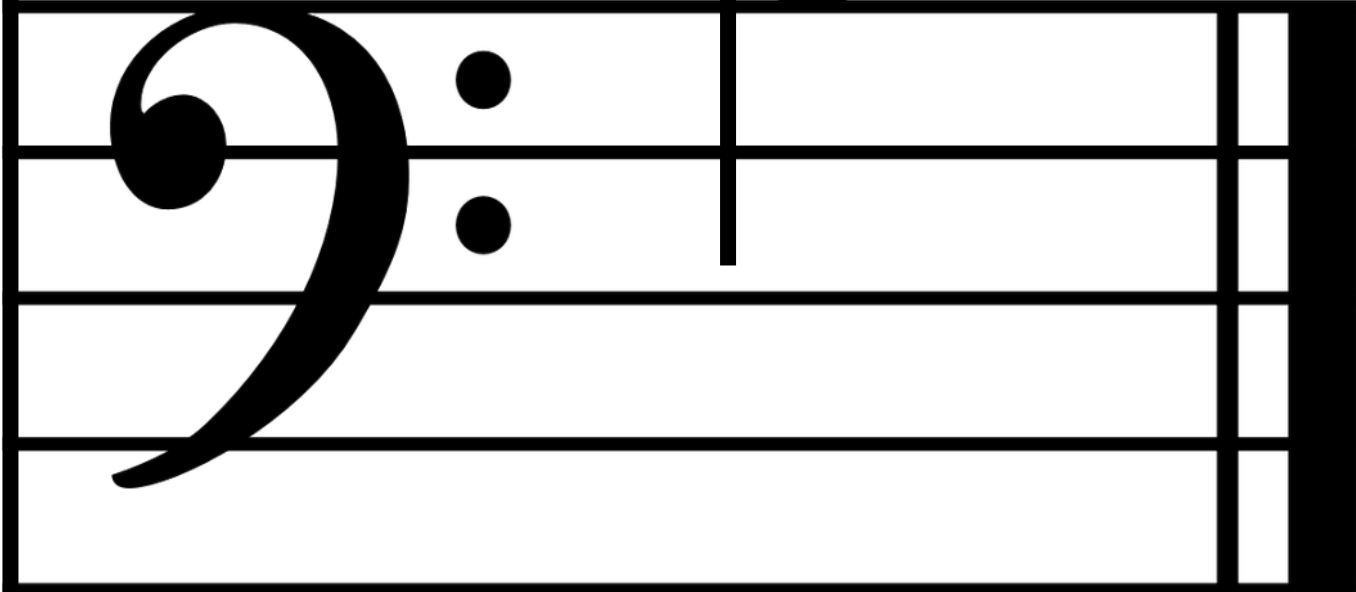
D

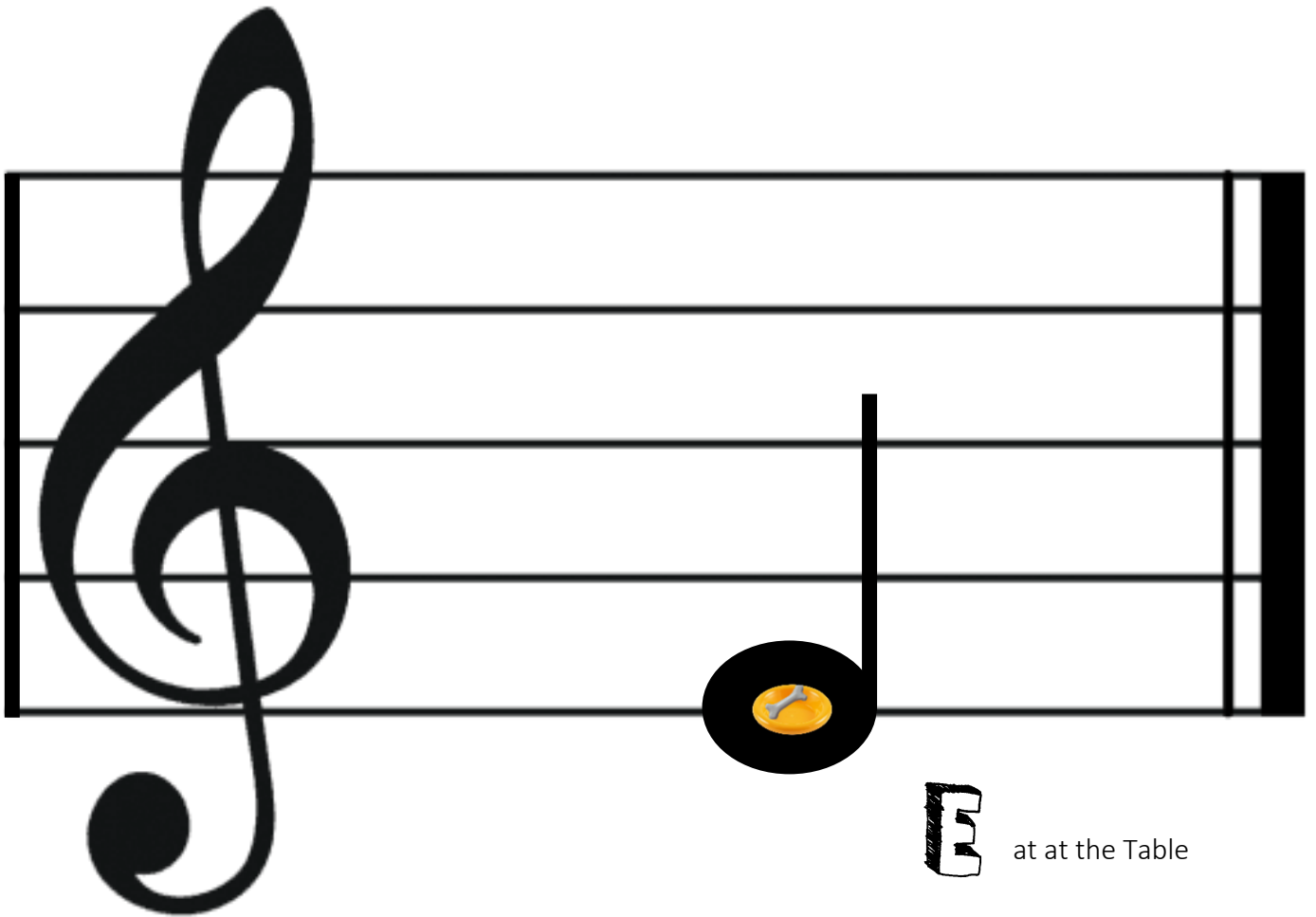
og Under the Table



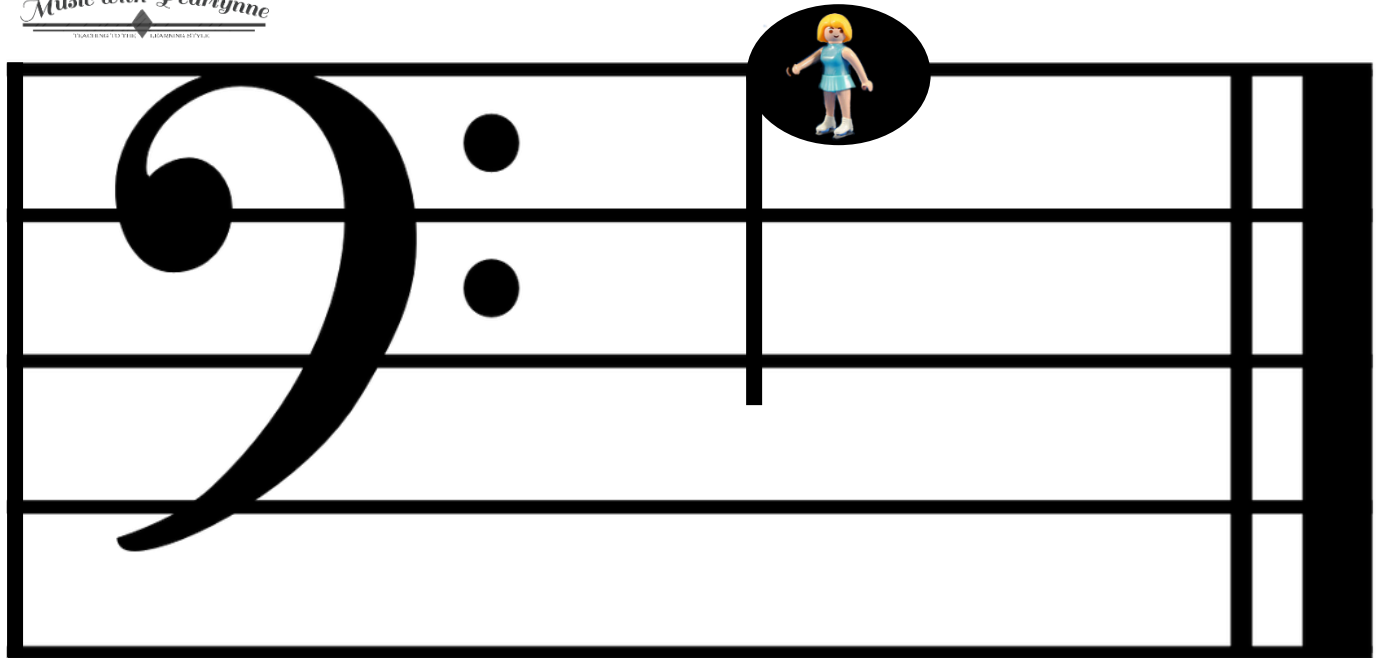
B

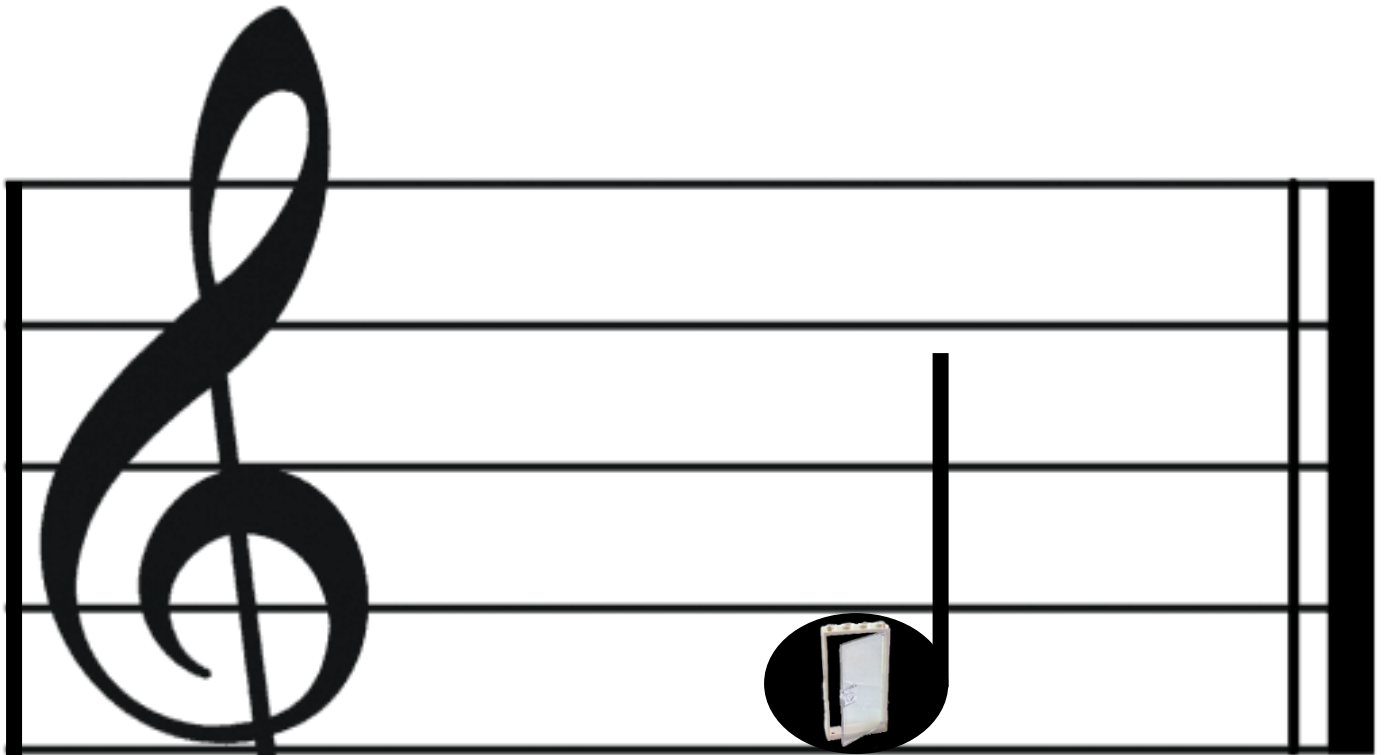
ird on a Wire



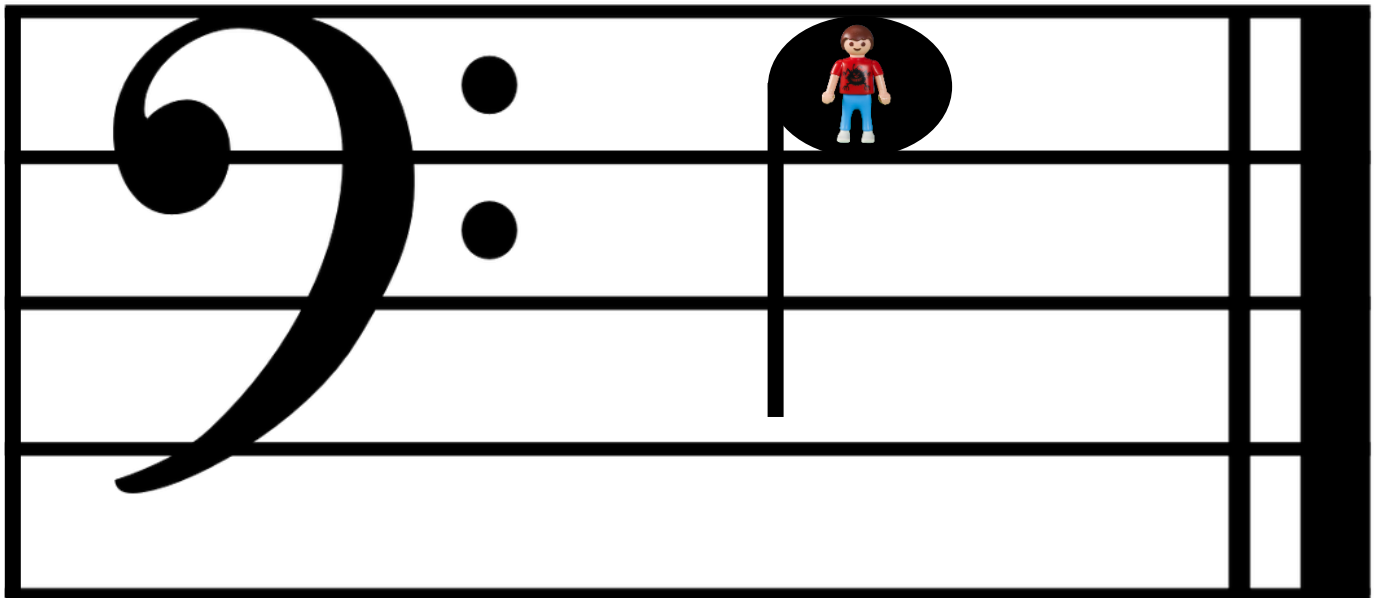


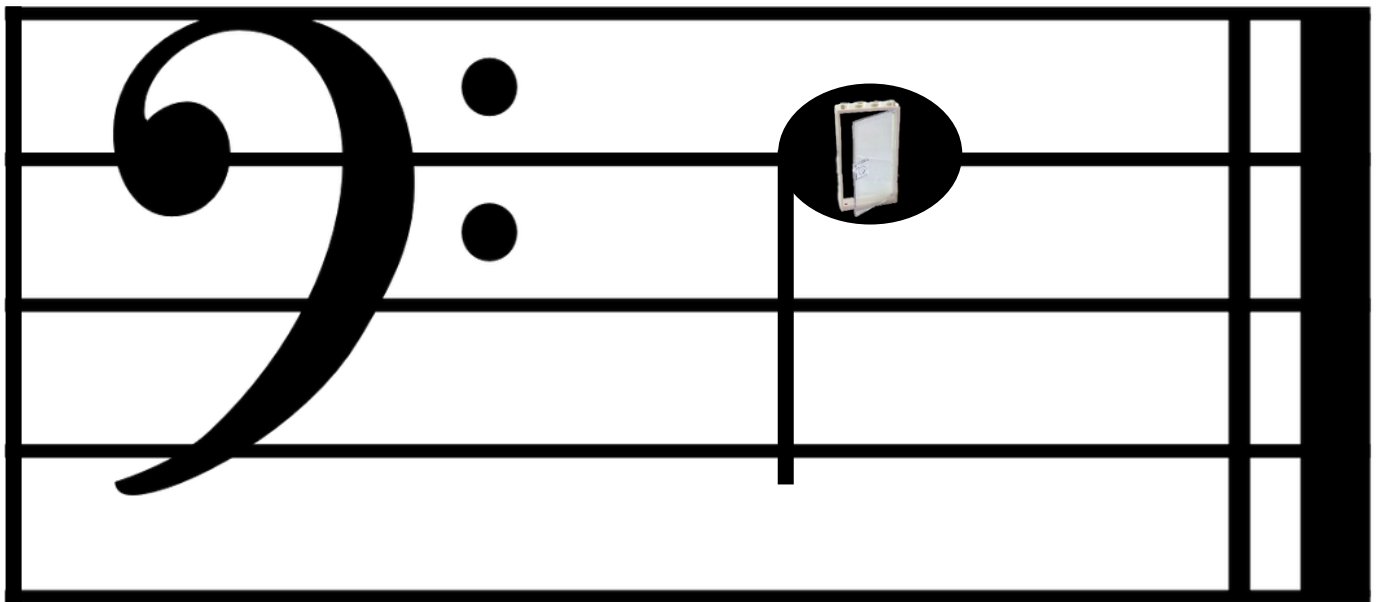
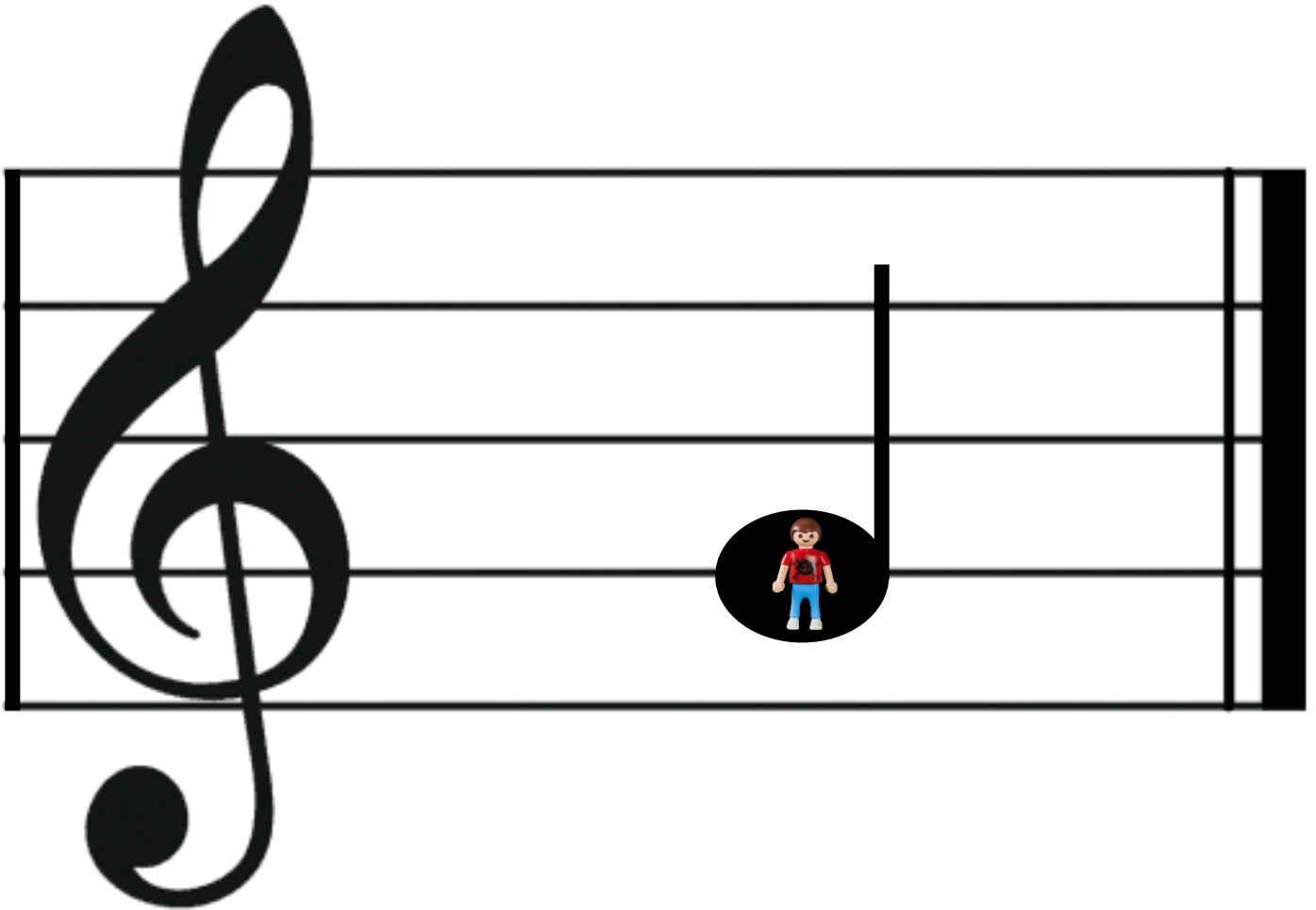
E at at the Table

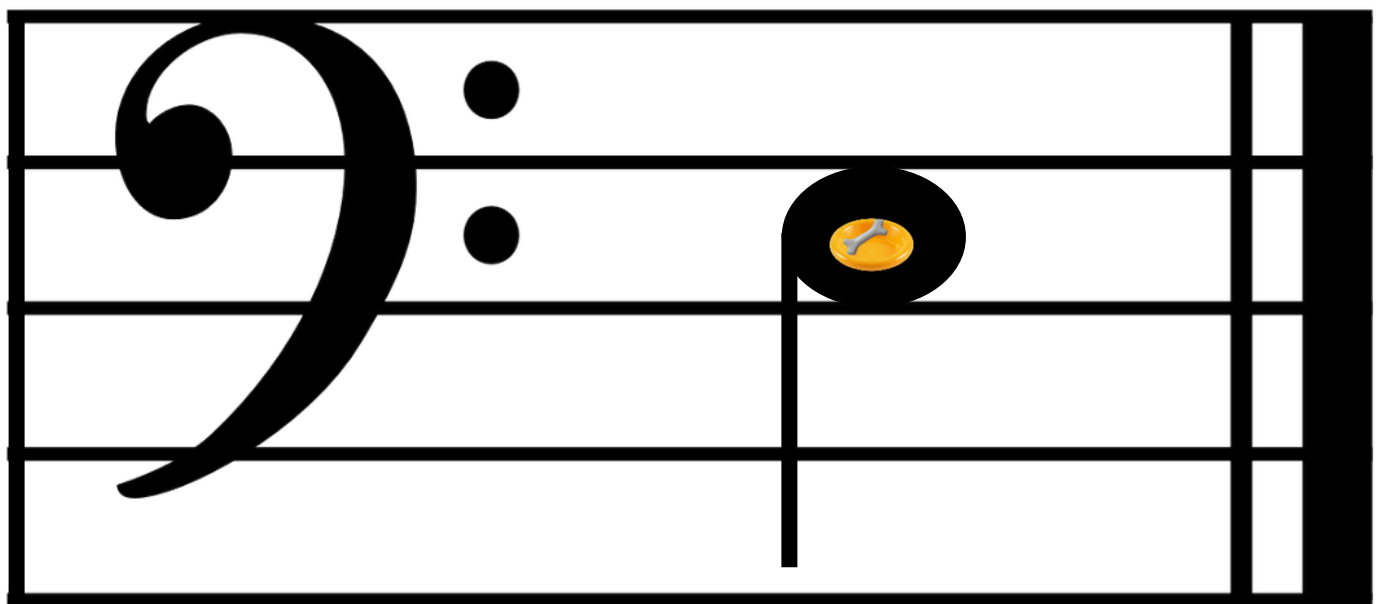
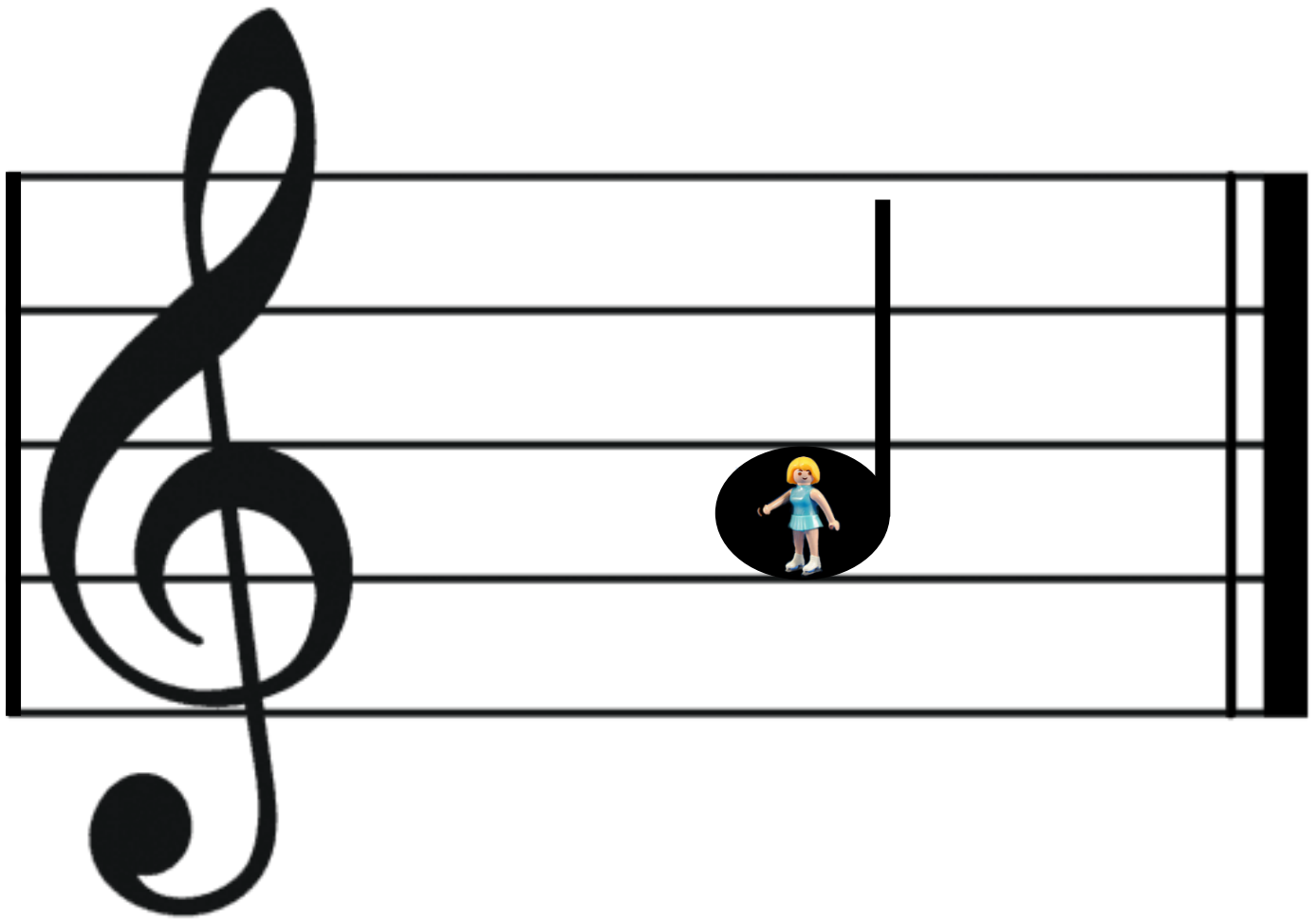


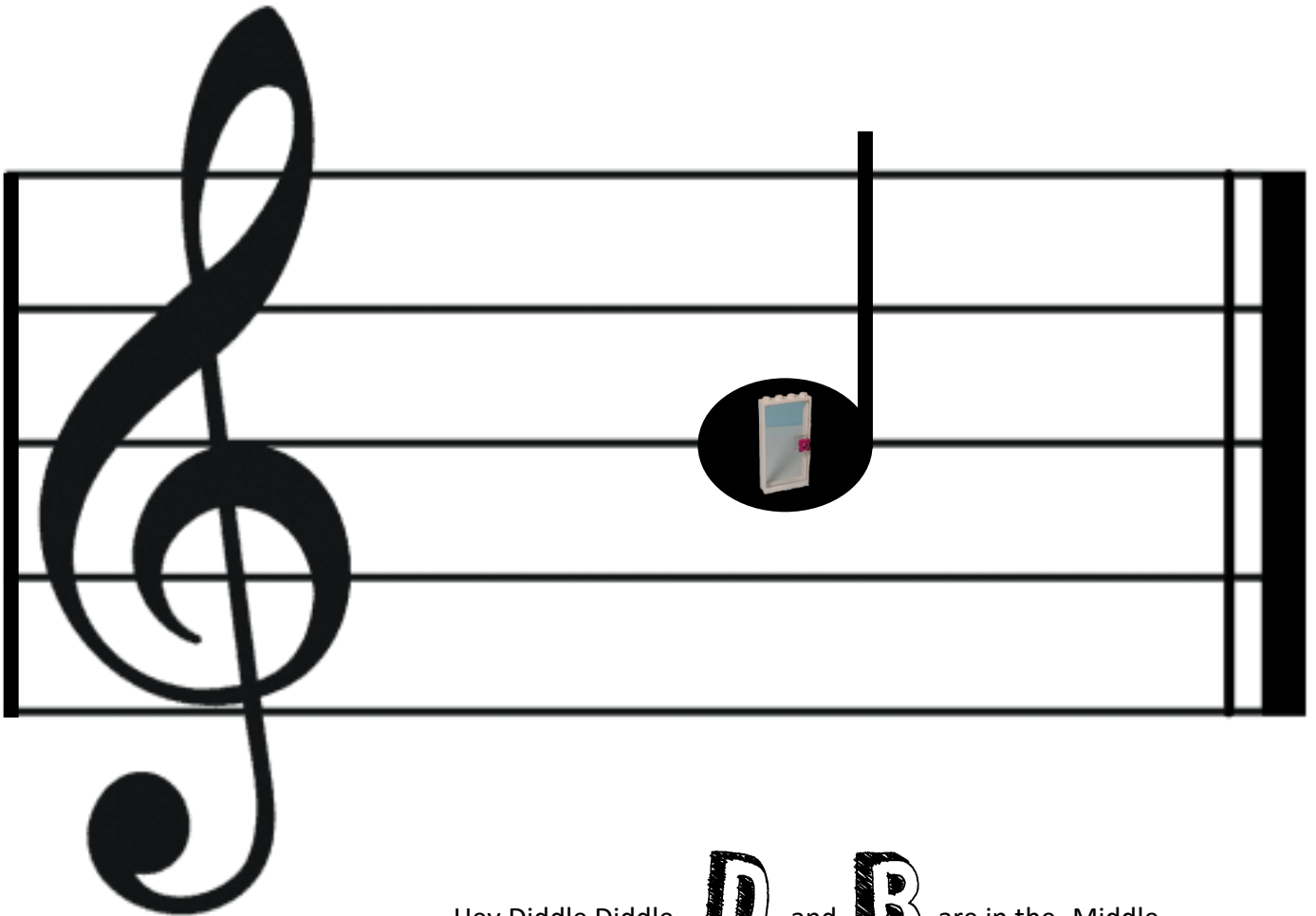


F irst Space

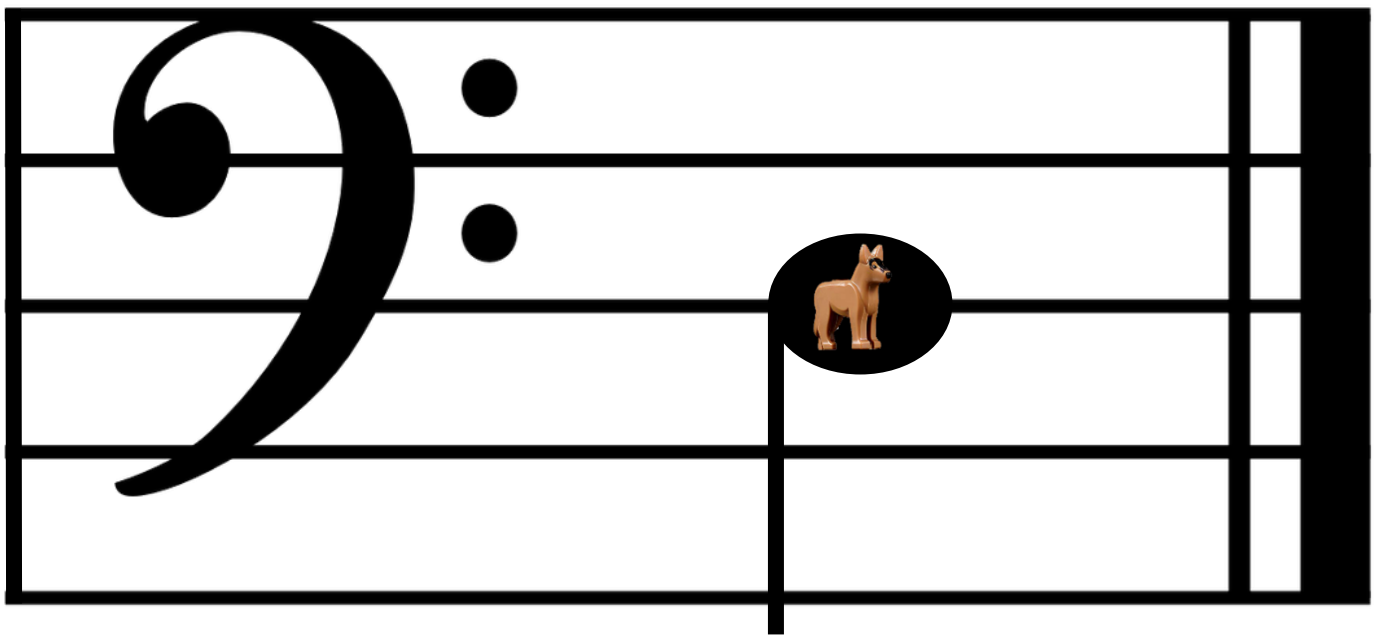


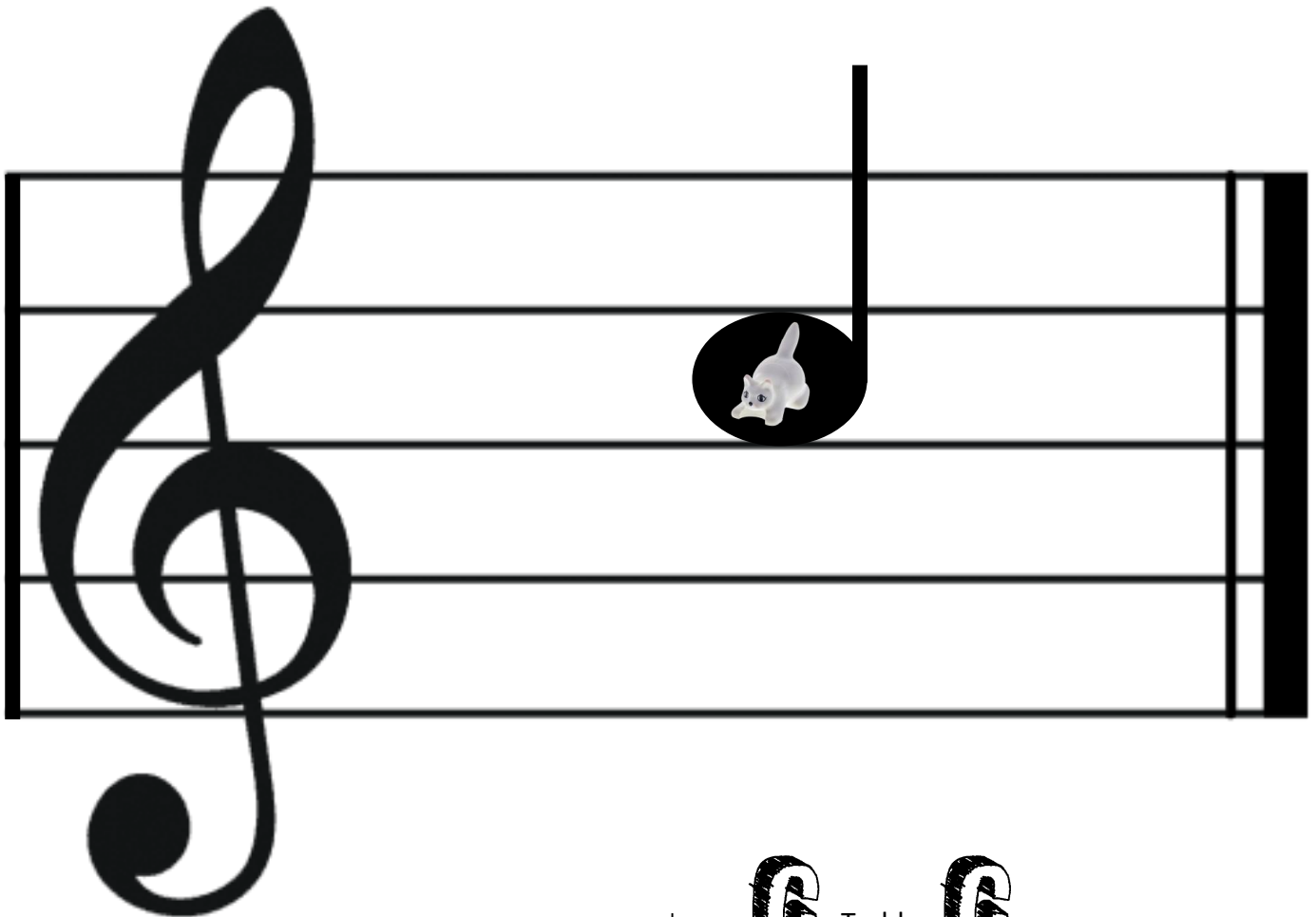






Hey Diddle Diddle **D** and **B** are in the Middle





Low **G** Treble **G**

